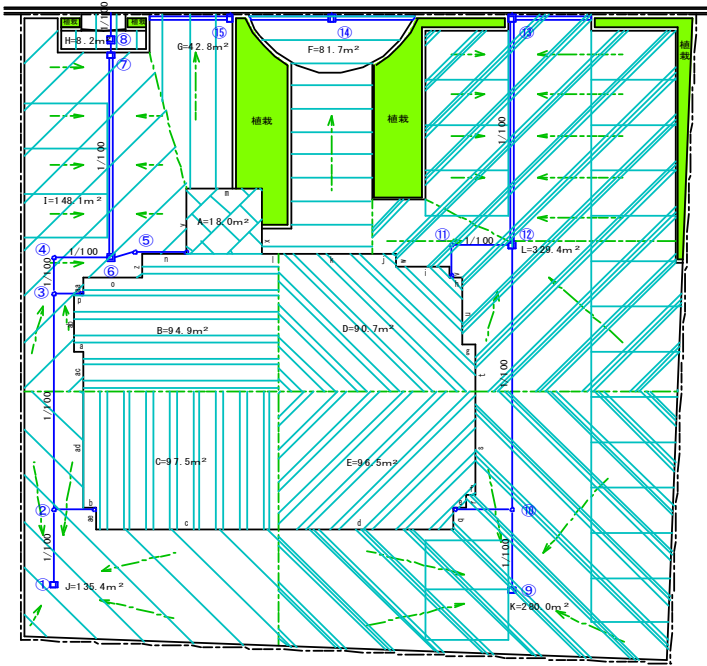
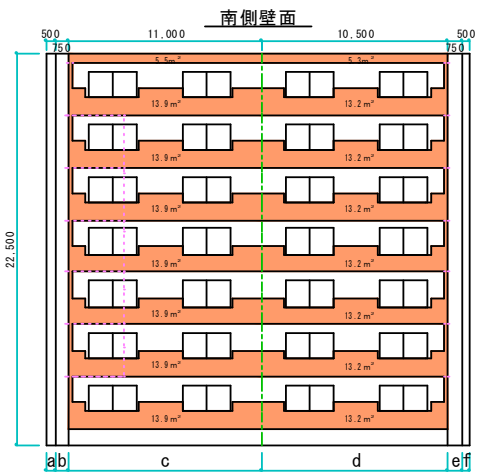


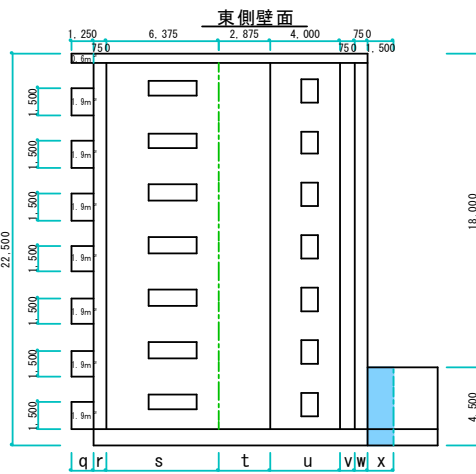
雨水管径の根拠図面



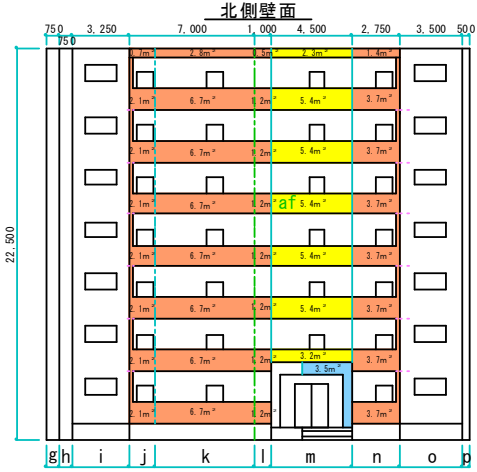
- ① J + b + c + ad + ae
= 135.4 + 8.44 + 51.4 + 80.16 + 6.95 = 282.35m²
 - ② ① + C
= 282.35 + 97.5 = 379.85m²
 - ③ ② + B
= 379.85 + 94.9 = 474.75m²
 - ④ ③
= 474.75m²
 - ⑤ A + af
= 18.0 + 16.25 = 34.25m²
 - ⑥ ④ + ⑤ + I + a + n + o + p + y + z + aa + ab + ac
= 474.75 + 34.25 + 148.1 + 5.63 + 13.65 + 39.38 + 5.63 + 9 + 16.88 + 11.25 + 39.38 + 26.72 = 824.62m²
 - ⑦ ⑥
= 824.62m²
 - ⑧ ⑦ + H
= 824.62 + 8.2 = 832.82m²
 - ⑨ K + d + e + f + g + r + s
= 280.0 + 48.85 + 8.44 + 5.63 + 6.95 + 8.44 + 71.72 = 430.03m²
 - ⑩ ⑨ + E
= 430.03 + 96.5 = 526.53m²
 - ⑪ D
= 90.7m²
 - ⑫ ⑩ + ⑪ + L + t + u + v + w + g + h + i + j
= 526.53 + 90.7 + 329.4 + 32.34 + 45 + 8.44 + 8.44 + 8.44 + 8.44 + 36.56 + 7.7 = 1,101.99m²
 - ⑬ ⑫
= 1,101.99m²
 - ⑭ F + k + l + x
= 81.7 + 24.85 + 4.45 + 3.38 = 114.38m²
 - ⑮ G + m
= 42.8 + 1.75 = 44.55m²
- ①~② φ125
 - ②~③ φ125
 - ③~④ φ125
 - ④~⑤ φ150
 - ⑤~⑥ φ150
 - ⑥~⑦ φ150
 - ⑦~⑧ φ200
 - ⑧~側溝 φ200
 - ⑨~⑩ φ150
 - ⑩~⑪ φ150
 - ⑪~⑫ φ100
 - ⑫~⑬ φ200
 - ⑬~側溝 φ200
 - ⑭~側溝 φ100
 - ⑮~側溝 φ100



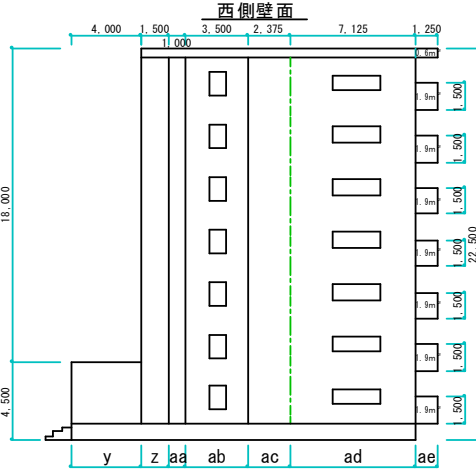
- a = 0.5 × 22.5 ÷ 2 = 5.63
- b = 0.75 × 22.5 ÷ 2 = 8.44
- c = 0.5 + 13.9 × 7 ÷ 2 = 51.4
- d = 0.5 + 13.2 × 7 ÷ 2 = 48.85
- e = 0.75 × 22.5 ÷ 2 = 8.44
- f = 0.5 × 22.5 ÷ 2 = 5.63



- g = (0.6 + 1.9 × 7) ÷ 2 = 6.95
- h = 0.75 × 22.5 ÷ 2 = 8.44
- i = 6.375 × 22.5 ÷ 2 = 71.72
- t = 2.875 × 22.5 ÷ 2 = 32.34
- u = 4.0 × 22.5 ÷ 2 = 45
- v = 0.75 × 22.5 ÷ 2 = 8.44
- w = 0.75 × 22.5 ÷ 2 = 8.44
- x = 1.5 × 4.5 ÷ 2 = 3.38



- a = 0.75 × 22.5 ÷ 2 = 8.44
- b = 0.75 × 22.5 ÷ 2 = 8.44
- i = 3.25 × 22.5 ÷ 2 = 36.56
- j = (0.7 + 2.1 × 7) ÷ 2 = 7.7
- k = (2.8 + 6.7 × 7) ÷ 2 = 24.85
- l = (0.5 + 1.2 × 7) ÷ 2 = 4.45
- m = 3.5 ÷ 2 = 1.75
- n = (1.4 + 3.7 × 7) ÷ 2 = 13.65
- o = 3.5 × 22.5 ÷ 2 = 39.38
- p = 0.5 × 22.5 ÷ 2 = 5.63
- af = (2.3 + 5.4 × 5 + 3.2) ÷ 2 = 16.25



- y = 4.0 × 4.5 ÷ 2 = 9
- z = 1.5 × 22.5 ÷ 2 = 16.88
- aa = 1.0 × 22.5 ÷ 2 = 11.25
- ab = 3.5 × 22.5 ÷ 2 = 39.38
- ac = 2.375 × 22.5 ÷ 2 = 26.72
- ad = 7.125 × 22.5 ÷ 2 = 80.16
- ae = (0.6 + 1.9 × 7) ÷ 2 = 6.95