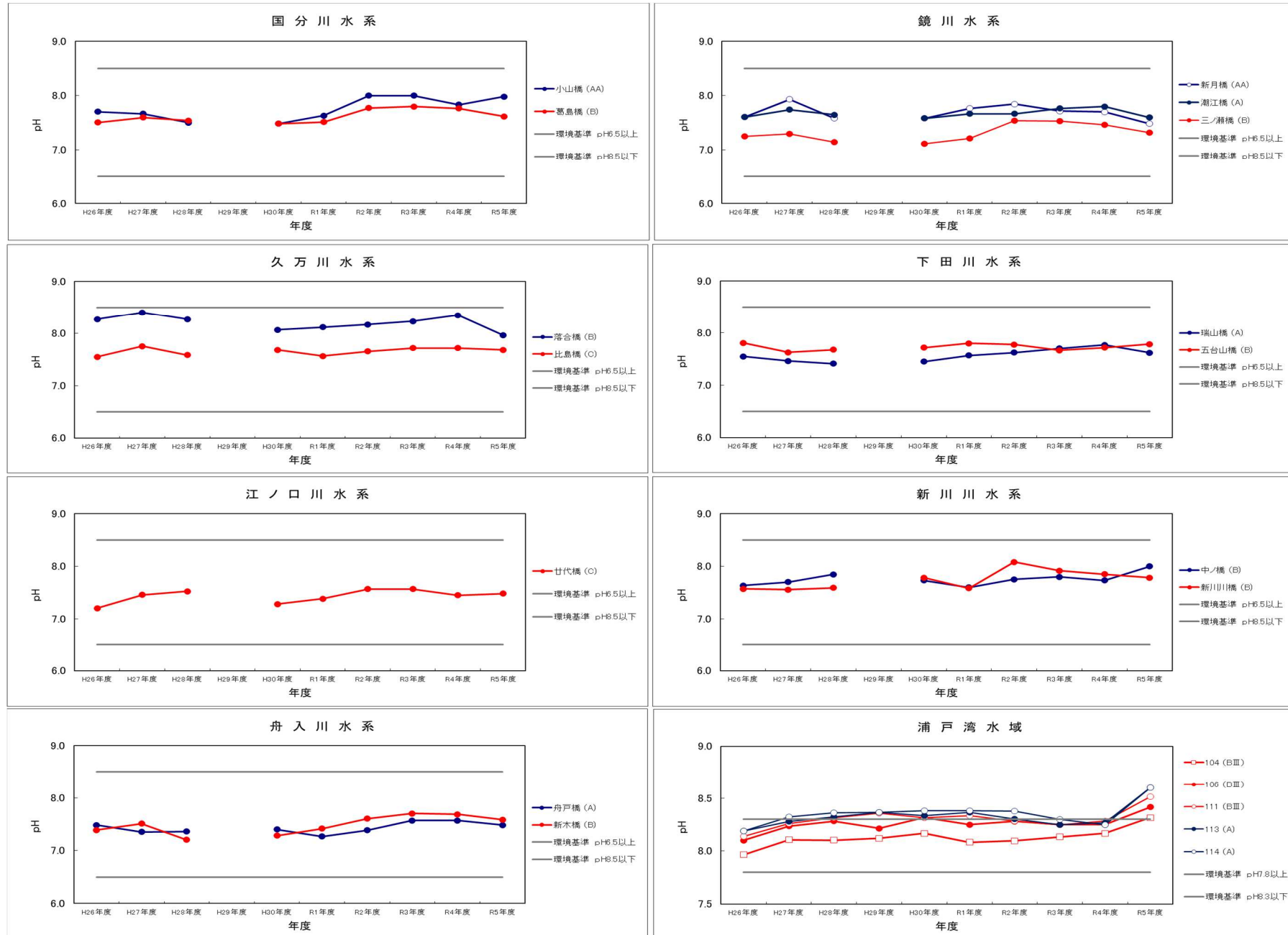


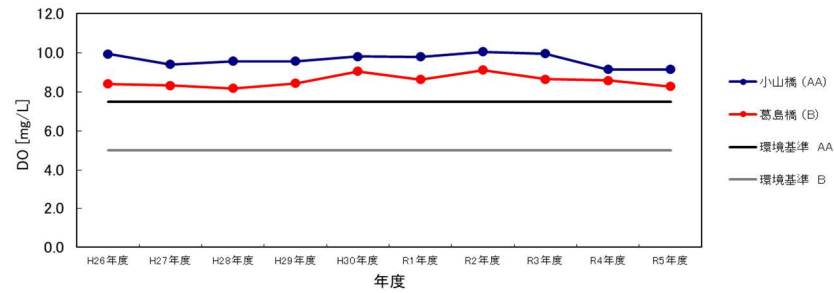
pH



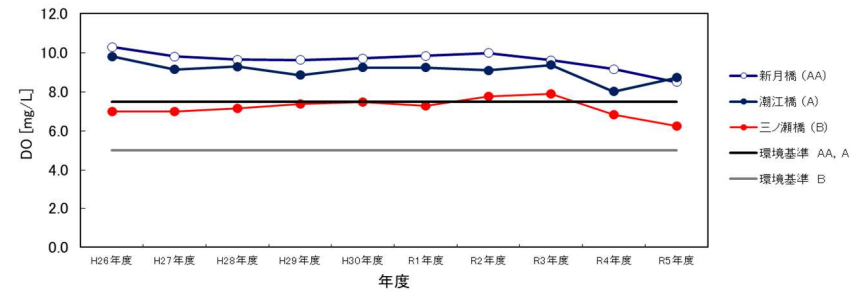
※平成 29 年度の河川の pH は機器の故障のため欠測

DO

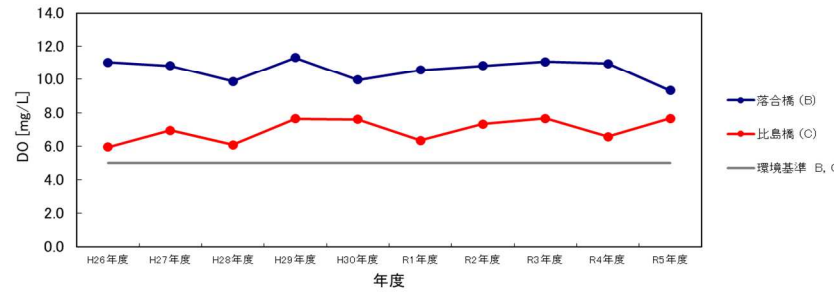
国分川水系



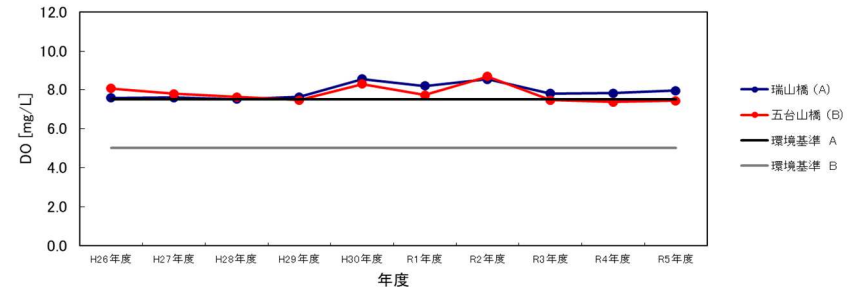
鏡川水系



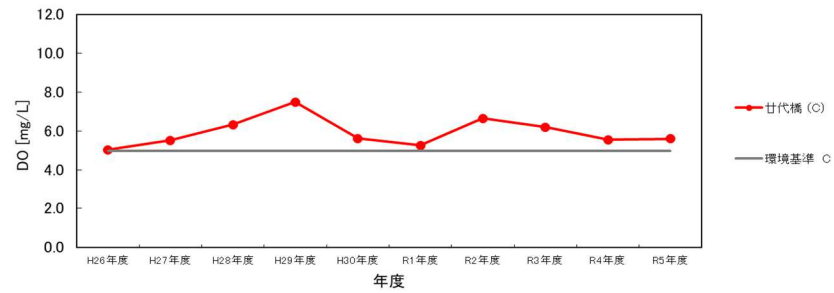
久万川水系



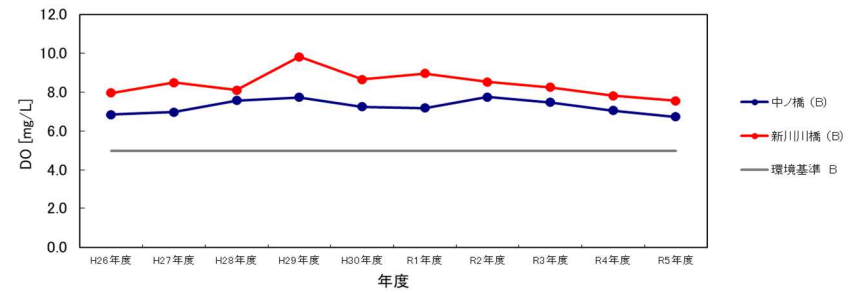
下田川水系



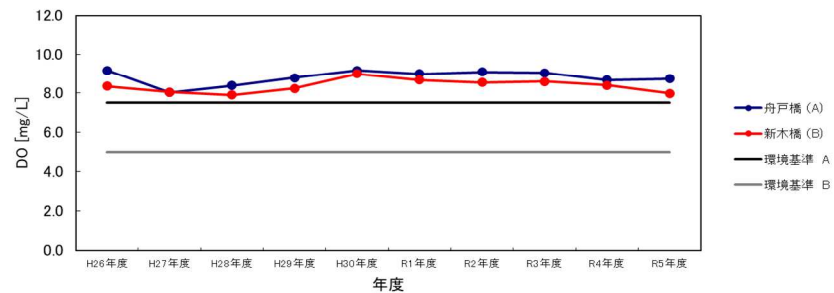
江ノ口川水系



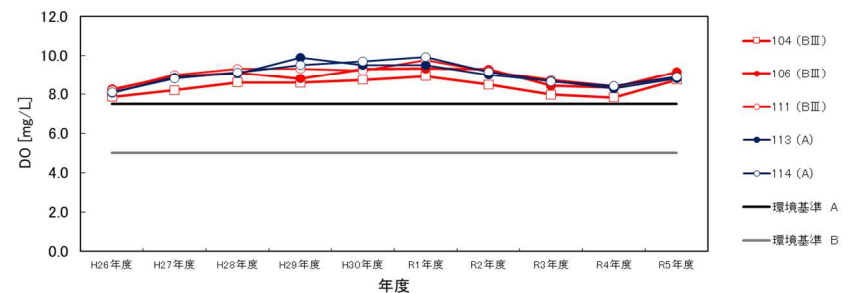
新川川水系



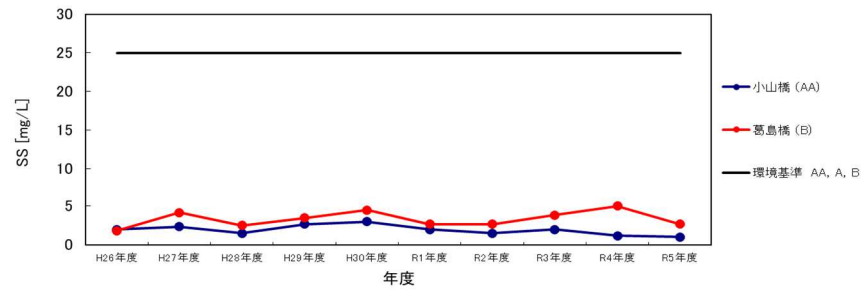
舟入川水系



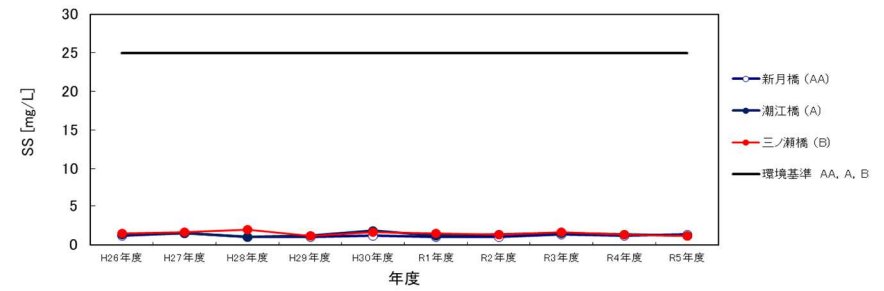
浦戸湾水域



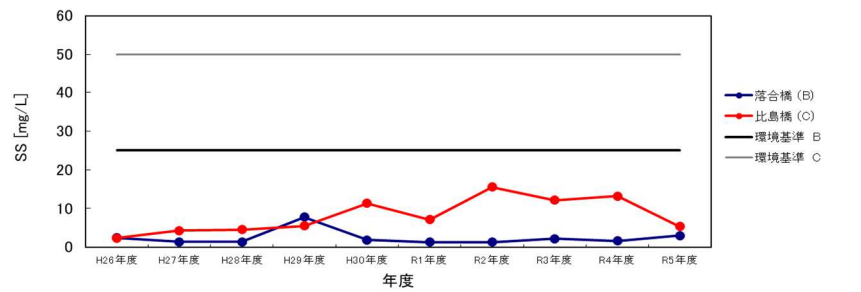
国分川水系



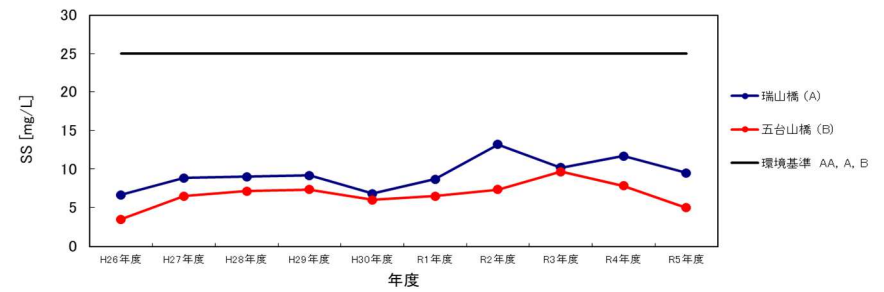
鏡川水系



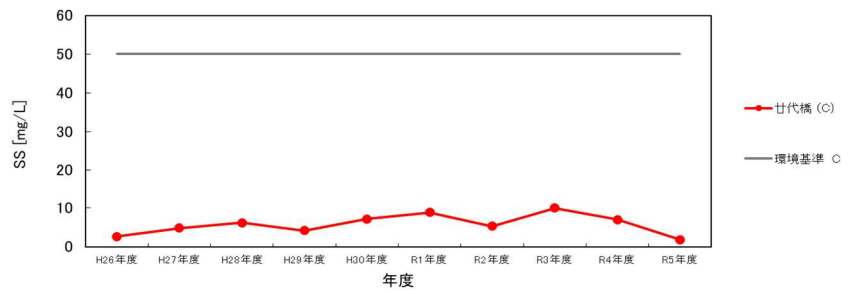
久万川水系



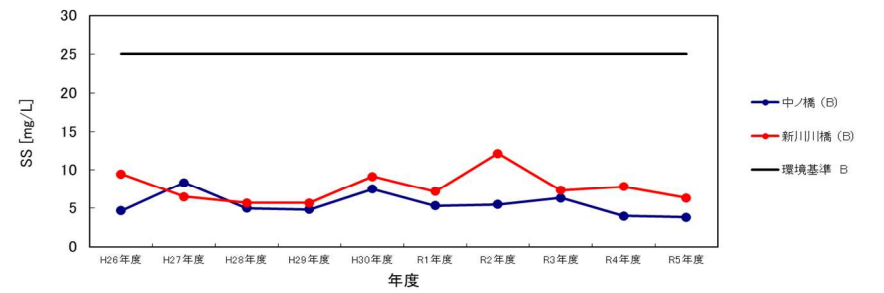
下田川水系



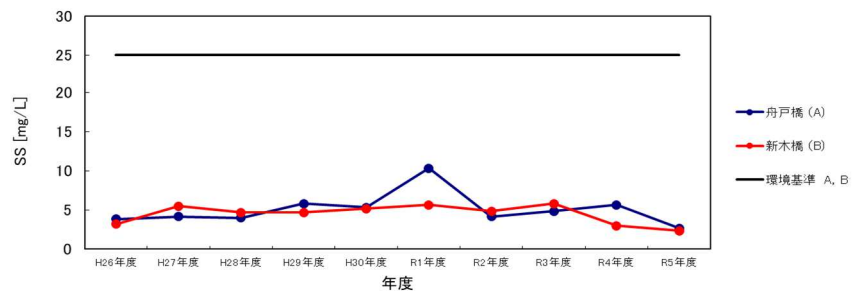
江ノ口川水系



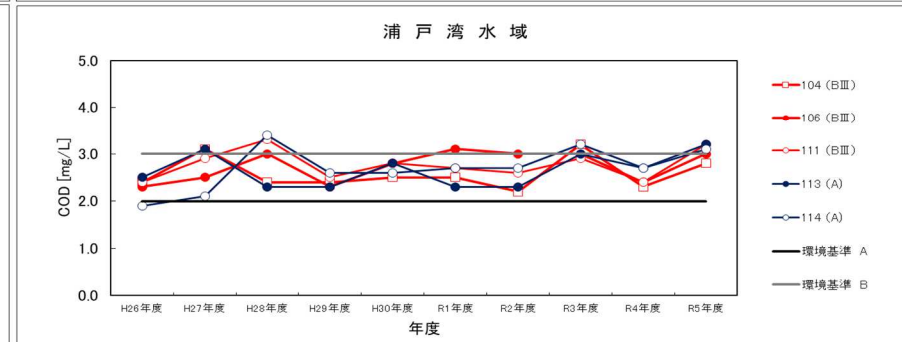
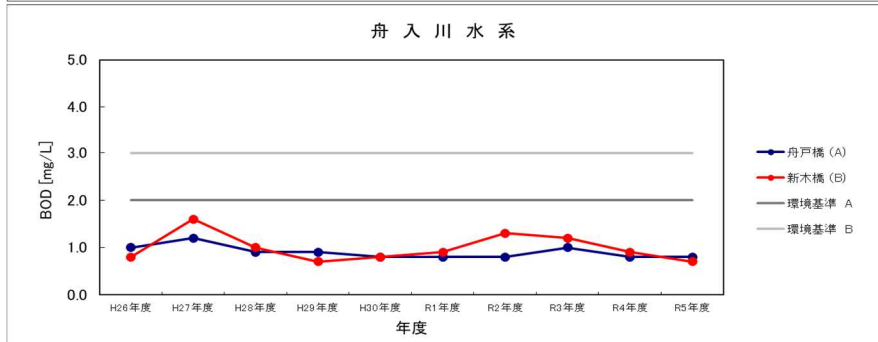
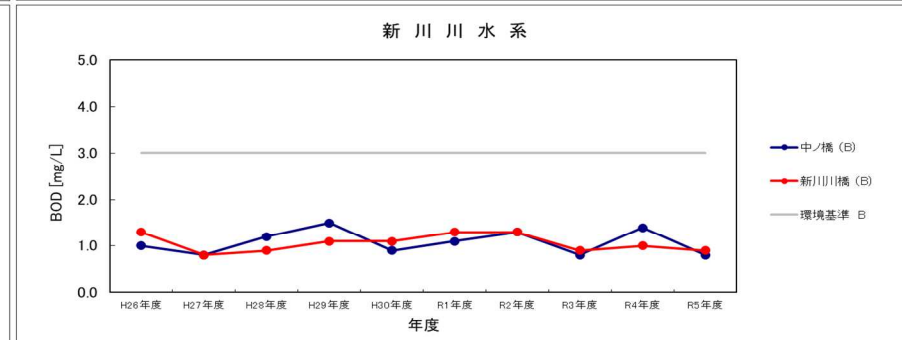
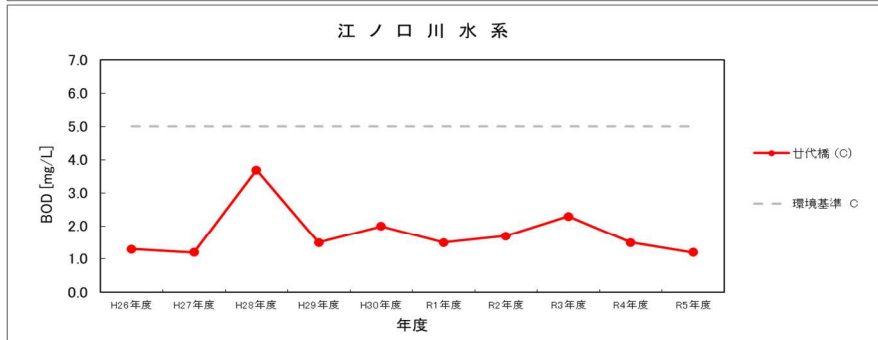
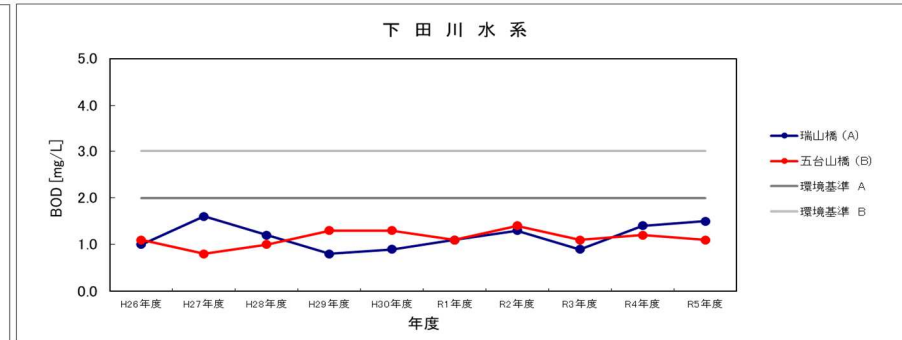
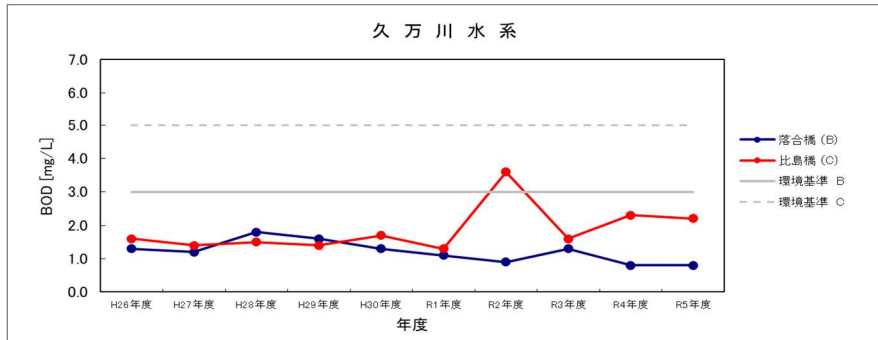
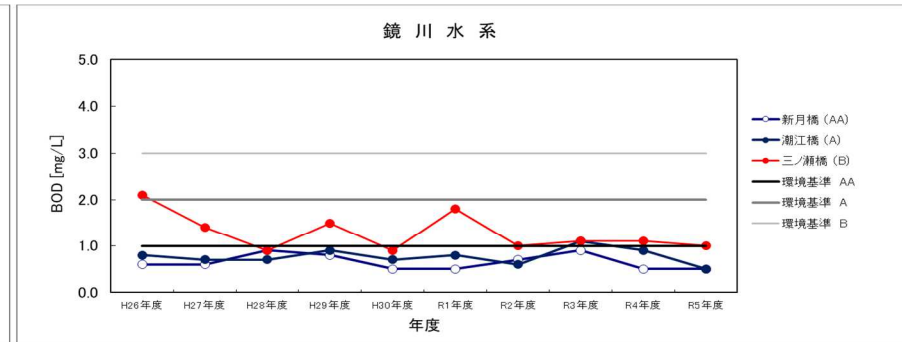
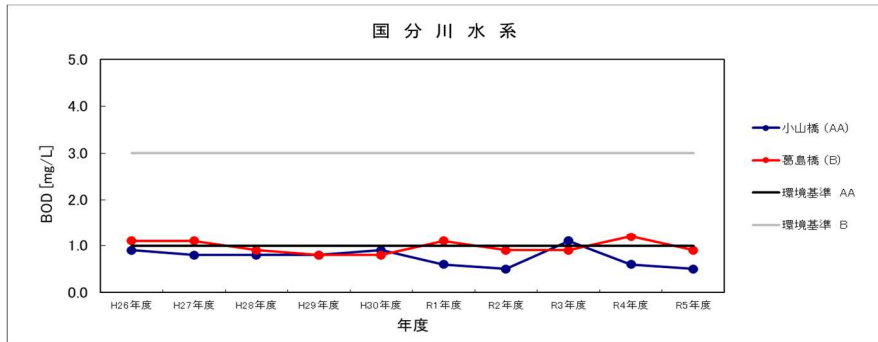
新川川水系



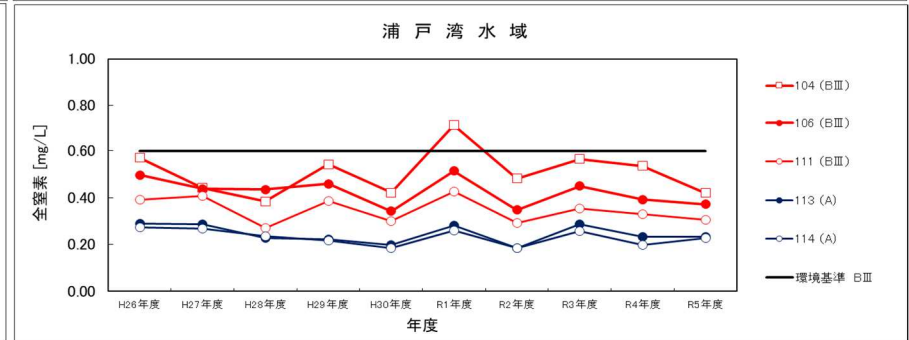
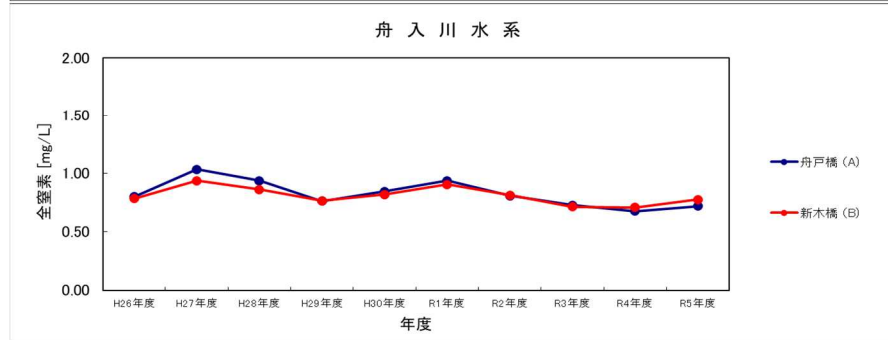
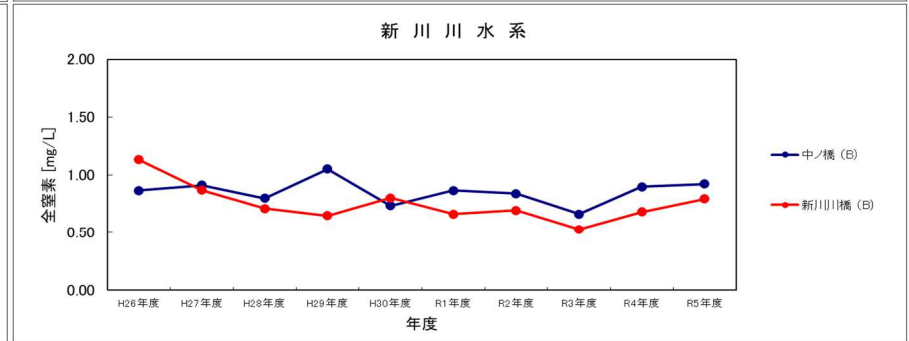
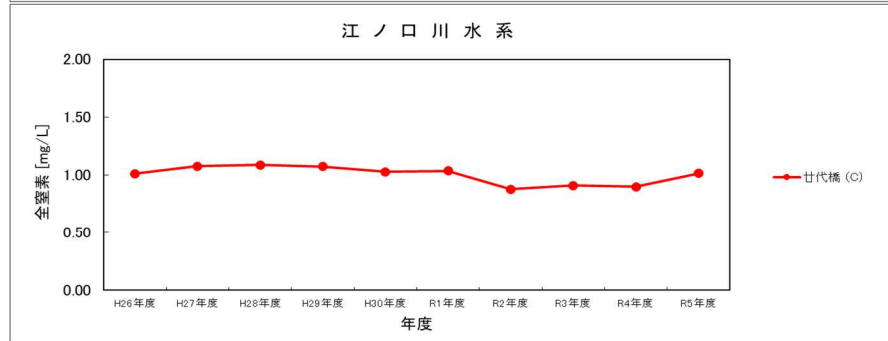
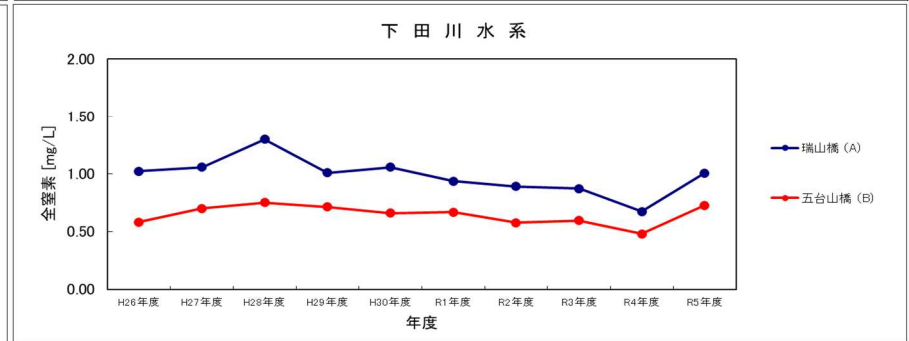
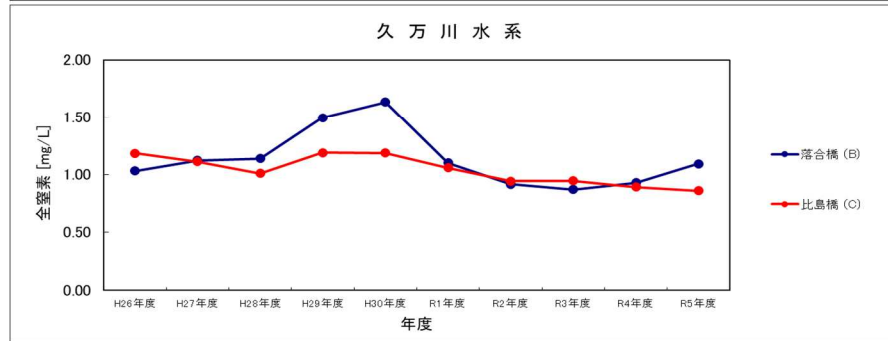
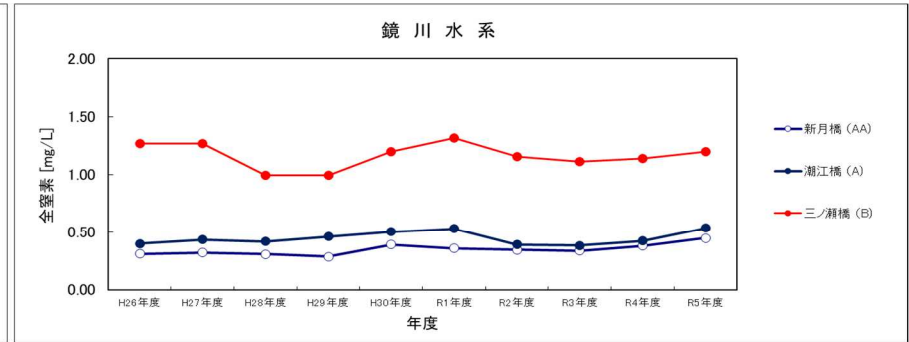
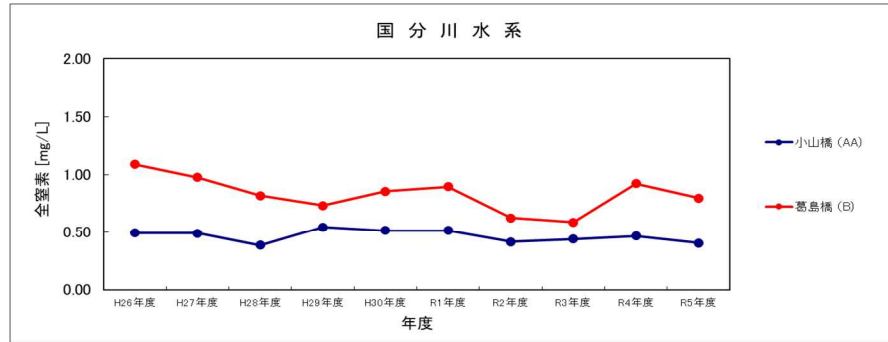
舟入川水系



BOD、COD (年間 75%値)

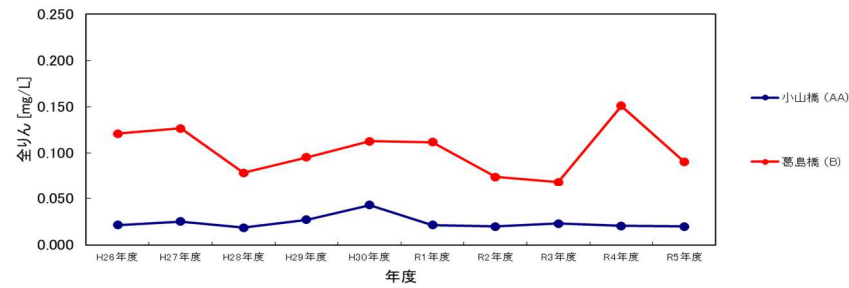


全窒素

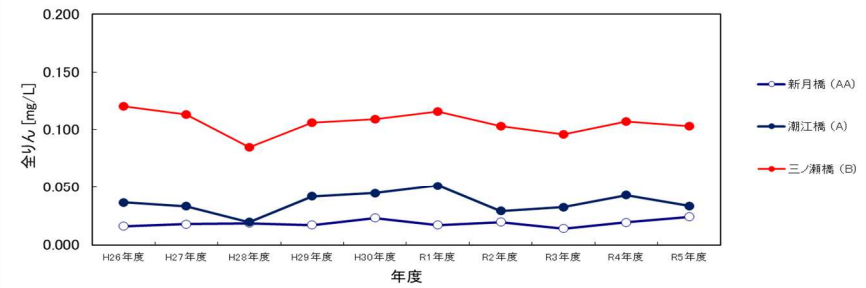


全りん

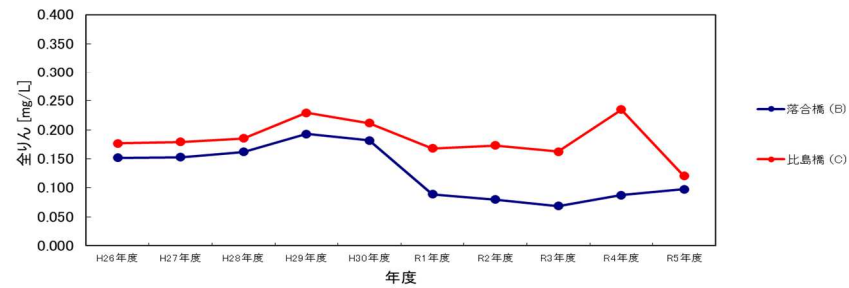
国分川水系



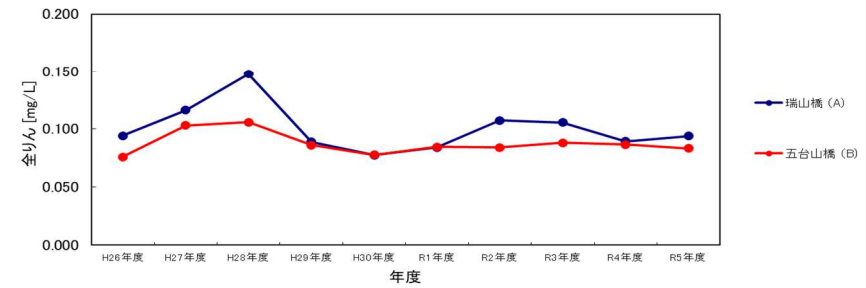
鏡川水系



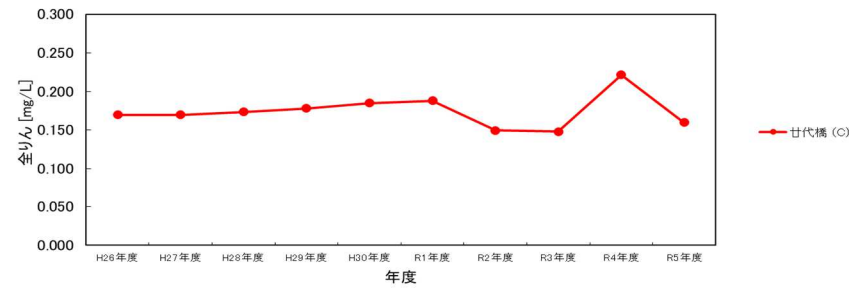
久万川水系



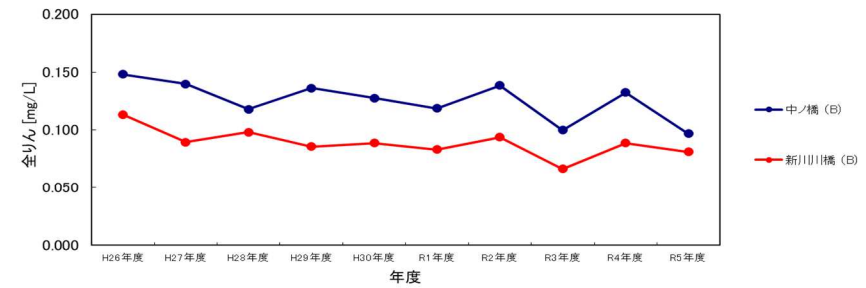
下田川水系



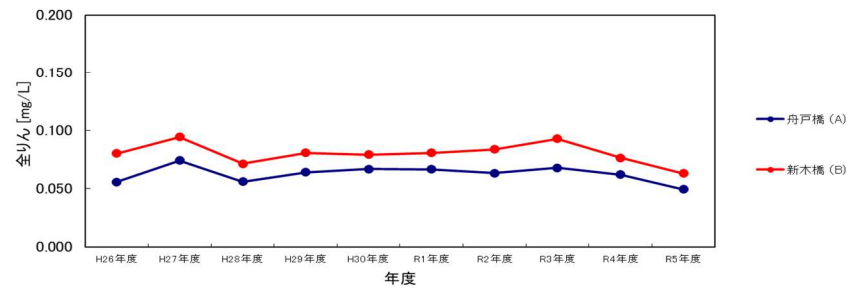
江ノ口川水系



新川川水系



舟入川水系



浦戸湾水域

